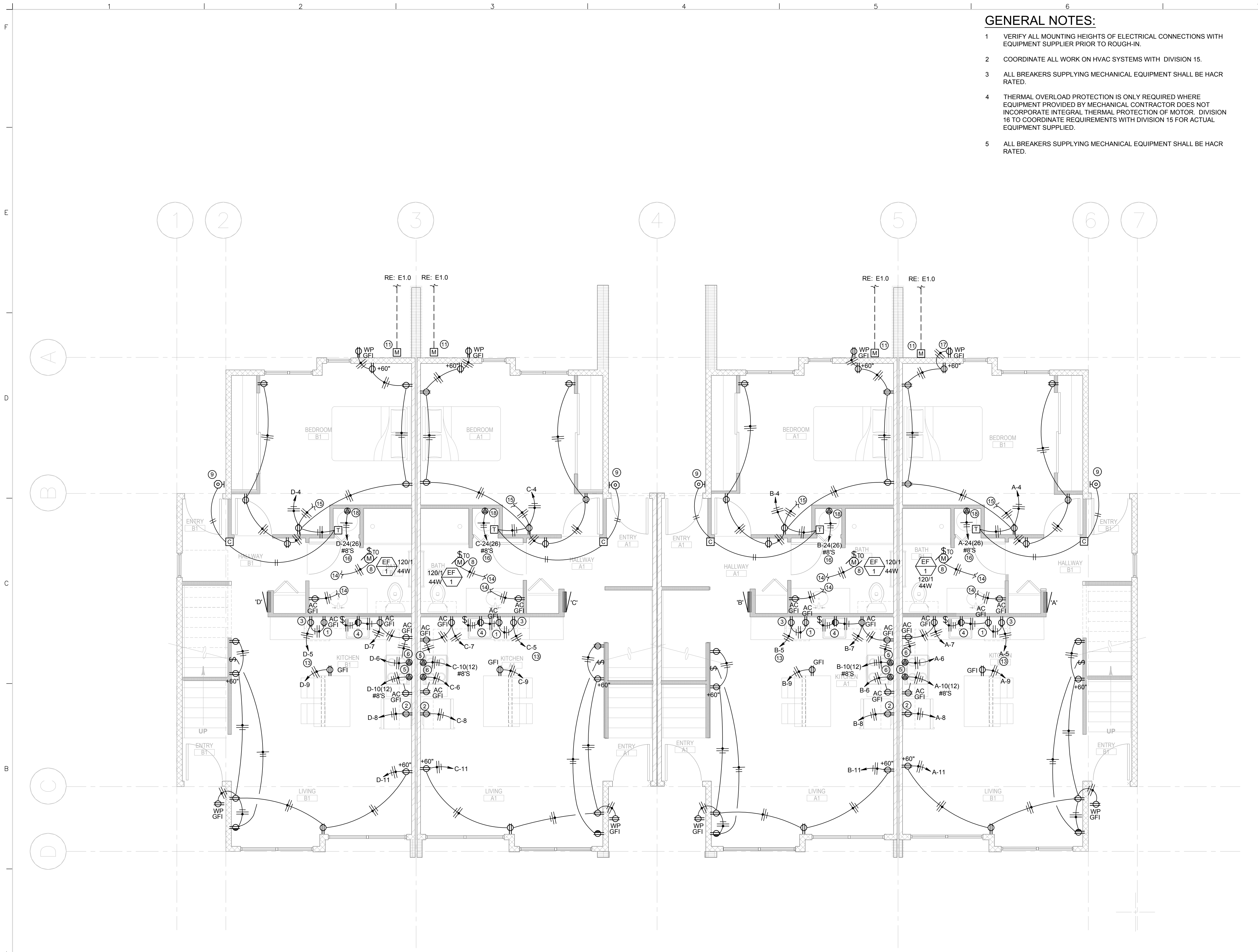


11/07/16 4:11:32 PM THINK Christina Grosso



GENERAL NOTES:

- 1 VERIFY ALL MOUNTING HEIGHTS OF ELECTRICAL CONNECTIONS WITH EQUIPMENT SUPPLIER PRIOR TO ROUGH-IN.
- 2 COORDINATE ALL WORK ON HVAC SYSTEMS WITH DIVISION 15.
- 3 ALL BREAKERS SUPPLYING MECHANICAL EQUIPMENT SHALL BE HACR RATED.
- 4 THERMAL OVERLOAD PROTECTION IS ONLY REQUIRED WHERE EQUIPMENT PROVIDED BY MECHANICAL CONTRACTOR DOES NOT INCORPORATE INTEGRAL THERMAL PROTECTION OF MOTOR. DIVISION 16 TO COORDINATE REQUIREMENTS WITH DIVISION 15 FOR ACTUAL EQUIPMENT SUPPLIED.
- 5 ALL BREAKERS SUPPLYING MECHANICAL EQUIPMENT SHALL BE HACR RATED.

- 6 CONTRACTOR SHALL COORDINATE ELECTRICAL SYSTEMS INSTALLATION TO AVOID CONFLICTS WITH DUCT WORK/PIPING AND OTHER TRADES
- 7 ALL 120V, 1Ø BREAKERS SUPPLYING CIRCUITS IN THE FOLLOWING AREAS SHALL BE PROVIDED WITH COMBINATION ARC-FAULT PROTECTION: FAMILY ROOMS, DINING ROOMS, LIVING ROOMS, PARLORS, LIBRARIES, DEN, BEDROOMS, SUNROOMS, RECREATION ROOMS, CLOSETS, HALLWAYS OR SIMILAR ROOMS OR AREAS. ARC FAULT SHALL BE INSTALLED EXCEPT WHERE NOT REQUIRED BY AHJ.
- 8 RECEPTACLES SHALL BE INSTALLED WITH THE PROVISIONS LISTED BELOW.

GENERAL ROOMS

- WALL RECEPTACLES EVERY 12 FEET.
- RECEPTACLES ON ANY WALL SPACE MORE THAN 24 INCHES WIDE.
- HALLWAYS MORE THAN 10 FEET MUST HAVE AT LEAST ONE RECEPTACLE.
- 15 AMP CIRCUITS FOR GENERAL ROOMS ARE PERMITTED TO BE 20 AMP.
- ALL RECEPTACLES TO BE TAMPER RESISTANT TYPE.

RESIDENTIAL BATHROOMS

- ONLY INSTALL GFCI (GROUND FAULT CURRENT INTERRUPTER) RECEPTACLES IN BATHROOMS.
- THERE MUST BE A RECEPTACLE WITHIN 3 FEET OF THE OUTSIDE EDGE OF SINK BASIN.
- NO RECEPTACLES FACE-UP ON COUNTERTOPS.
- EACH BATHROOM RECEPTACLES MUST BE ON AT LEAST ONE SEPARATE 20 AMP. BRANCH CIRCUIT.

KITCHENS

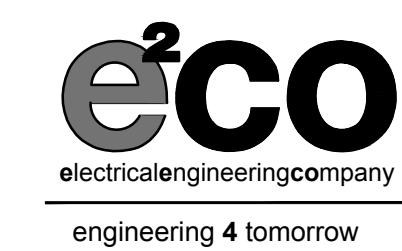
- ALL COUNTERTOPS RECEPTACLES MUST BE GFCI.
- NO RECEPTACLES MORE THAN 20 INCHES ABOVE COUNTERTOPS. EXCEPTIONS ARE FOR THE PHYSICALLY HANDICAPPED AND FOR ISLANDS OR PENINSULAS WHERE THIS IS NOT POSSIBLE.
- RECEPTACLES ABOVE ALL COUNTERTOPS 12 INCHES OR WIDER.
- NO FACE-UP RECEPTACLES.
- AT LEAST ONE RECEPTACLE FOR ISLANDS OR PENINSULAS.
- AT LEAST TWO BRANCH CIRCUITS MUST SUPPLY THE COUNTERTOP RECEPTACLES.

KEYED NOTES:

- 1 RECEPTACLE FOR MICROWAVE. COORDINATE MOUNTING WITH MILLWORK PRIOR TO ROUGH-IN.
- 2 RECEPTACLE FOR REFRIGERATOR.
- 3 CONNECTION TO DISHWASHER. COORDINATE CONNECTION WITH EQUIPMENT PRIOR TO ROUGH-IN.
- 4 RECEPTACLE MOUNTED UNDER SINK FOR GARBAGE DISPOSER. COORDINATE LOCATION WITH MILLWORK. CIRCUIT HALF OF RECEPTACLE THROUGH SWITCH AND HALF TO BE UNSWITCHED.
- 5 CONNECTION FOR RANGE. COORDINATE CONNECTION REQUIREMENTS WITH EQUIPMENT PRIOR TO ROUGH-IN.
- 6 CONNECTION TO RANGE/MICROWAVE HOOD; COORDINATE CONNECTION WITH EQUIPMENT PRIOR TO ROUGH-IN. COORDINATE MOUNTING HEIGHT AND EQUIPMENT CONNECTION REQUIREMENTS WITH EQUIPMENT SUPPLIER.
- 7 CONNECTION TO WATER HEATER; COORDINATE CONNECTION WITH EQUIPMENT PRIOR TO ROUGH-IN.
- 8 CONNECTION TO COMBINATION EXHAUST FAN/LIGHT. COORDINATE CONNECTION TYPE AND LOCATION WITH MECHANICAL CONTRACTOR. COMBINATION UNIT TO BE SWITCHED WITH LIGHT SWITCH. SEE SHEET E2.0L FOR ADDITIONAL INFORMATION.
- 9 FURNISH AND INSTALL DOORBELL SYSTEM WITH PUSH BUTTON, TRANSFORMER AND CHIME. TRANSFORMER IS TO BE LOCATED IN CLOSET ADJACENT TO WATER HEATER AND THE CHIME TO BE MOUNTED IN ENTRY HALLWAY. DOORBELL SYSTEM TO BE NUTONE OR EQUAL.
- 10 PRIOR TO ROUGH-IN DIVISION 16 TO COORDINATE LOCATION AND MOUNTING HEIGHTS OF T-STAT OR SENSOR WITH DIVISION 15. DIVISION 16 TO FURNISH AND INSTALL BACKBOX, 1/2" CONDUIT, AND CONDUCTORS UP TO ABOVE CEILING; CONTINUE CONDUCTORS TO MECHANICAL EQUIPMENT INDICATED. DIVISION 15 TO FURNISH T-STAT OR SENSOR AND MAKE FINAL CONNECTIONS. COORDINATE SIZE AND NUMBER OF CONDUCTORS WITH DIVISION 15.
- 11 SERVICE ENTRANCE. SEE ONE LINE DIAGRAM ON SHEET E3.0 FOR ADDITIONAL INFORMATION.
- 12 RECEPTACLE TO BE MOUNTED IN MEDIA ENCLOSURE.
- 13 FURNISH AND INSTALL GFCI TYPE BREAKER FOR RECEPTACLE PROTECTION.
- 14 CONNECT TO UNSWITCHED LEG OF LIGHTING BRANCH CIRCUIT FOR BATHROOM. SEE SHEET E2.0L FOR ADDITIONAL INFORMATION.
- 15 CONNECT TO LIGHTING FIXTURES IN BEDROOM. SEE SHEET E2.0L FOR ADDITIONAL INFORMATION.
- 16 FURNISH AND INSTALL WITH LOCKABLE BREAKER FOR WATER HEATER. WATER HEATER IS 240/120, 4.5KW.
- 17 RECEPTACLE AT SERVICE ENTRANCE EQUIPMENT PER NATIONAL ELECTRICAL CODE.
- 18 FURNISH AND INSTALL WHIP FROM JUNCTION BOX TO WATER HEATER FOR ELECTRICAL CONNECTION. HOMERUN SHALL BE INSTALLED FROM UNCTION BOX TO PANEL AT POSITIONS INDICATED.

FIRST FLOOR POWER PLAN
SCALE: 1/4" = 1'-0"

FOR CITY REVIEW
NOT FOR CONSTRUCTION

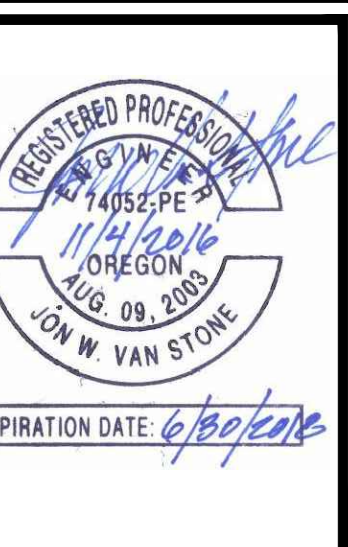


world wide web: e2co.com
 800 s. industry way, suite 350
 meridian, idaho 83642
 phone: 208.378.4450
 fax: 208.378.4451
 e2co project #: 16154



405 S. 8th St, Suite 290
 Boise, Idaho 83702
 p: 208.685.2855
 f: 208.685.2857
 info@think-arch.com

NEW DEVELOPMENT
THE 27 ELM
 A HUNTER RENAISSANCE DEVELOPMENT
 REDMOND OREGON



COVER SHEET

Sheet Title
AS NOTED
 Scale
 Project Number
1602
 Date
NOVEMBER 8, 2016
 File Name
16154 E20P.DWG

Revisions

E2.0P